

MAGE-1 (Target for Cancer Immunotherapy) Antibody - With BSA and Azide
Mouse Monoclonal Antibody [Clone MZ2E/838]
Catalog # AH11783

Specification

MAGE-1 (Target for Cancer Immunotherapy) Antibody - With BSA and Azide - Product Information

Application	IHC, IF, FC
Primary Accession	P43355
Other Accession	4100, 72879
Reactivity	Human
Host	Mouse
Clonality	Monoclonal
Isotype	Mouse / IgG1, kappa
Calculated MW	42-46kDa KDa

MAGE-1 (Target for Cancer Immunotherapy) Antibody - With BSA and Azide - Additional Information

Gene ID 4100

Other Names

Melanoma-associated antigen 1, Antigen MZ2-E, Cancer/testis antigen 1.1, CT1.1, MAGE-1 antigen, MAGEA1, MAGE1, MAGE1A

Application Note

IHC~~1:100~500
IF~~1:50~200
FC~~1:10~50

Storage

Store at 2 to 8°C. Antibody is stable for 24 months.

Precautions

MAGE-1 (Target for Cancer Immunotherapy) Antibody - With BSA and Azide is for research use only and not for use in diagnostic or therapeutic procedures.

MAGE-1 (Target for Cancer Immunotherapy) Antibody - With BSA and Azide - Protein Information

Name MAGEA1

Synonyms MAGE1, MAGE1A

Function

May be involved in transcriptional regulation through interaction with SNW1 and recruiting histone deacetylase HDAC1. May inhibit notch intracellular domain (NICD) transactivation. May play a role in embryonal development and tumor transformation or aspects of tumor progression. Antigen recognized on a melanoma by autologous cytolytic T-lymphocytes.

Cellular Location

Cytoplasm. Nucleus.

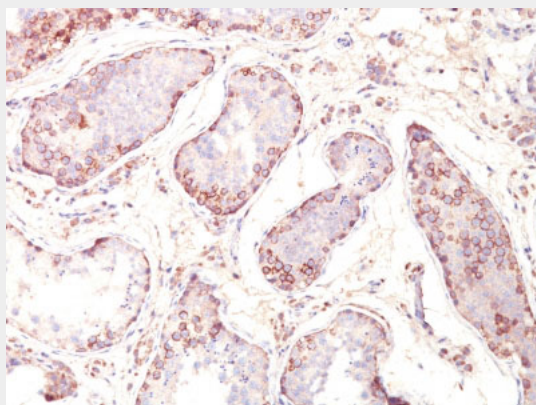
Tissue Location

Expressed in many tumors of several types, such as melanoma, head and neck squamous cell carcinoma, lung carcinoma and breast carcinoma, but not in normal tissues except for testes. Never expressed in kidney tumors, leukemias and lymphomas

MAGE-1 (Target for Cancer Immunotherapy) Antibody - With BSA and Azide - Protocols

Provided below are standard protocols that you may find useful for product applications.

- [Western Blot](#)
- [Blocking Peptides](#)
- [Dot Blot](#)
- [Immunohistochemistry](#)
- [Immunofluorescence](#)
- [Immunoprecipitation](#)
- [Flow Cytometry](#)
- [Cell Culture](#)

MAGE-1 (Target for Cancer Immunotherapy) Antibody - With BSA and Azide - Images

Formalin-fixed, paraffin-embedded human Testicular Carcinoma stained with MAGE-1 Monoclonal Antibody (MZ2E/838).

MAGE-1 (Target for Cancer Immunotherapy) Antibody - With BSA and Azide - Background

Recognizes a protein of 42-46kDa, identified as MAGE-1. This MAb does not cross-react with other members of MAGE-family. Human malignant neoplasms carry rejection antigens that are recognized by the patients' autologous, tumor directed and specific, cytolytic, CD8+ T lymphocyte clones (CTL). The MAGE family of genes codes an important group of antigens. It was identified that melanomas and primary glial brain tumors express common melanoma associated antigens (MAAs). Because MAGE-1 is expressed on a significant proportion of human neoplasms of various histological types (melanoma, brain tumors of glial origin, neuroblastoma, non-small cell lung cancer, breast, gastric, colorectal, ovarian, renal cell carcinomas) and not on normal tissues, the encoded antigen may serve as a marker of early detection and target for cancer immunotherapy.

MAGE-1 (Target for Cancer Immunotherapy) Antibody - With BSA and Azide - References

Kobayashi, Y., et al. 2000. Expression of MAGE, GAGE and BAGE genes in human liver diseases:

utility as molecular markers for hepatocellular carcinoma. J. Hepatol. 32: 612-617